

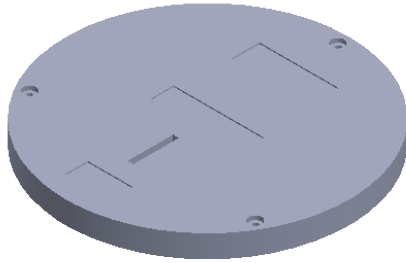


POLYMER CONCRETE BOX & COVER



MODEL 2700/36 PC

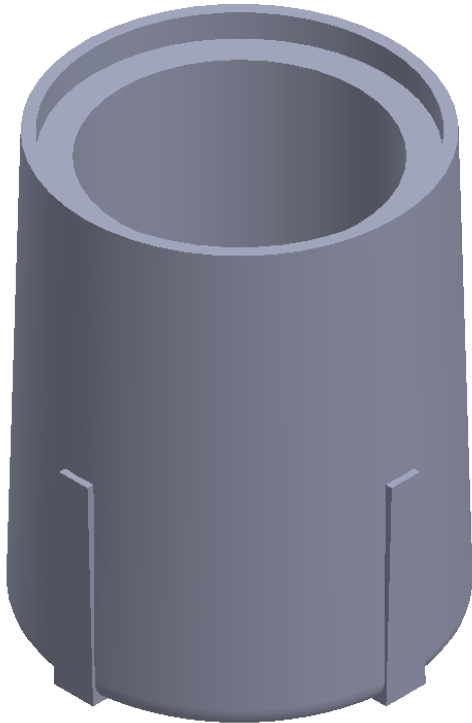
COVER



Dimensions*	Ø 25" x 2" THICK
Material	Polymer Concrete
Style	Single Piece
Fasteners	3/8-16 x 3" SS Hex Bolt
Lift points	1/4" SS Rod

Custom logo available

Body



Dimensions*	Ø 32 3/4" x 36" H
Material	Polymer Concrete

Additional body depths available

Notes

Rating Tier 22

* All dimensions & weights are approximate.

Lateral Loading Requirements

Design Load: 800lbs/sq. ft
Test Load: 1200lbs/sq. ft

Vertical Loading Requirements

Design Load: 22,500lbs
Test Load: 33,750lbs